



No.17 THE 926 ADVANTAGE PLUS



No.17 THE 926 ADVANTAGE PLUS

Model number: 57ADP16763LH18

3 beds • 2 baths • 1216 sq.ft. • 16' width • 76' depth

Our home building facilities invest in continuous product and process improvements. Plans, dimensions, features, materials, specifications and availability are subject to change without notice or obligation. Renderings and floor plans are representative likenesses of our homes and may differ from the actual homes. We invite you to tour a Home Center near you and inspect the highest value in quality housing available or call (757) 599-3803 to speak with a Home Consultant. Copyright 2017, CMH. All rights reserved.

<https://www.claytonhomesnewportnews.com>

CLAYTON HOMES- NEWPORT NEWS

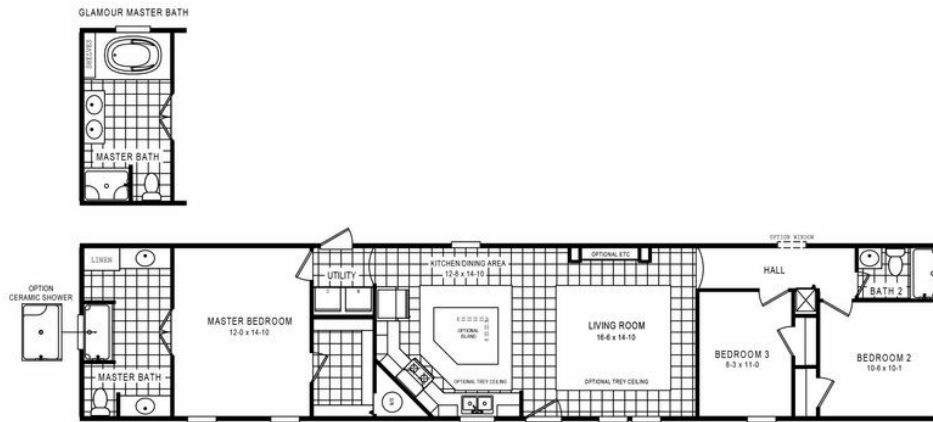
11281 JEFFERSON AVENUE
NEWPORT NEWS, VA 23601

Monday - Thursday: 9am to 6pm
Friday: 9am to 6pm
Saturday: 9am to 5pm
Sunday: Closed

(757) 599-3803



No.17 THE 926 ADVANTAGE PLUS



No.17 THE 926 ADVANTAGE PLUS Model number: 57ADP16763LH18

3 beds • 2 baths • 1216 sq.ft. • 16' width • 76' depth

Our home building facilities invest in continuous product and process improvements. Plans, dimensions, features, materials, specifications and availability are subject to change without notice or obligation. Renderings and floor plans are representative likenesses of our homes and may differ from the actual homes. We invite you to tour a Home Center near you and inspect the highest value in quality housing available or call (757) 599-3803 to speak with a Home Consultant. Copyright 2017, CMH. All rights reserved.

<https://www.claytonhomesnewportnews.com>

CLAYTON HOMES- NEWPORT NEWS

11281 JEFFERSON AVENUE
NEWPORT NEWS, VA 23601

Monday - Thursday: 9am to 6pm
Friday: 9am to 6pm
Saturday: 9am to 5pm
Sunday: Closed

(757) 599-3803