



## 2089 52X28 3+2 HERITAGE



### 2089 52X28 3+2 HERITAGE Model number:

**3 beds • 2 baths • 1386 sq.ft. • 28' width • 52' depth**

Our home building facilities invest in continuous product and process improvements. Plans, dimensions, features, materials, specifications and availability are subject to change without notice or obligation. Renderings and floor plans are representative likenesses of our homes and may differ from the actual homes. We invite you to tour a Home Center near you and inspect the highest value in quality housing available or call (757) 599-3803 to speak with a Home Consultant. Copyright 2017, CMH. All rights reserved.

<https://www.claytonhomesnewportnews.com>

### CLAYTON HOMES- NEWPORT NEWS

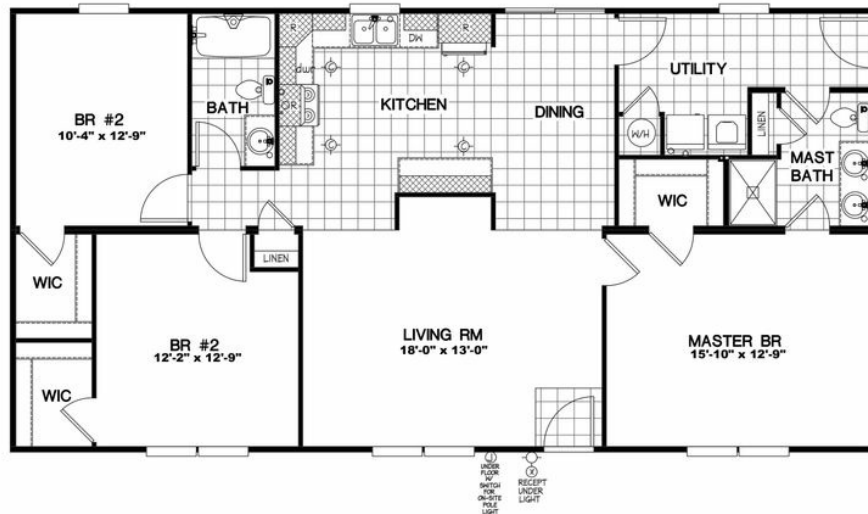
11281 JEFFERSON AVENUE  
NEWPORT NEWS, VA 23601

Monday - Thursday: 9am to 6pm  
Friday: 9am to 6pm  
Saturday: 9am to 5pm  
Sunday: Closed

(757) 599-3803



# 2089 52X28 3+2 HERITAGE



## 2089 52X28 3+2 HERITAGE Model number:

3 beds • 2 baths • 1386 sq.ft. • 28' width • 52' depth

Our home building facilities invest in continuous product and process improvements. Plans, dimensions, features, materials, specifications and availability are subject to change without notice or obligation. Renderings and floor plans are representative likenesses of our homes and may differ from the actual homes. We invite you to tour a Home Center near you and inspect the highest value in quality housing available or call (757) 599-3803 to speak with a Home Consultant. Copyright 2017, CMH. All rights reserved.

<https://www.claytonhomesnewportnews.com>

### CLAYTON HOMES- NEWPORT NEWS

11281 JEFFERSON AVENUE  
NEWPORT NEWS, VA 23601

Monday - Thursday: 9am to 6pm

Friday: 9am to 6pm

Saturday: 9am to 5pm

Sunday: Closed

(757) 599-3803